

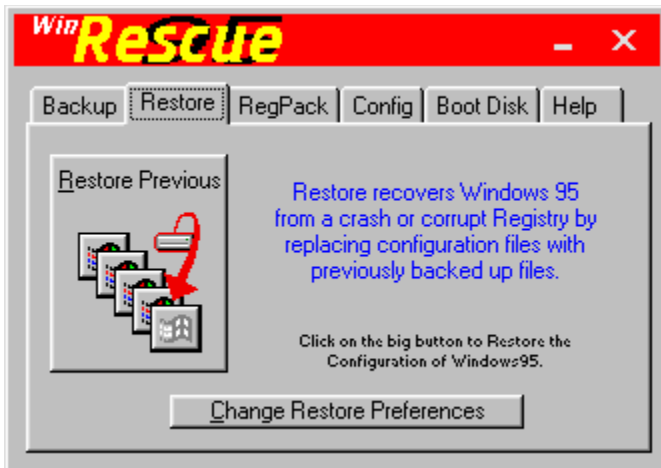


Click on an item above to get more information.

Backup Screen - press the Backup button to backup the configuration of Windows95. The registry and other configuration files are backed up. A spare copy of the registry is also placed in the Windows directory.

Press the "Change Backup Preferences" to change Backup Preferences, like, the number of backups, backup to diskette, diskette drive, which registry is backed up, the target directory, and backup compression.

Do not press the "Backup" button if Windows95 is not running correctly. If you have not performed a Backup with WinRescue, you cannot restore from a backup or from the Spare Registry. You may, however, try restoring the Previous Registry or using RegPack to fix the registry.



Click on an item above to get more information.

[Restore Screen](#) - press the [Restore button](#) to restore the configuration of Windows95. There are many ways to restore: [Restore Previous Registry](#), [Restore Spare Registry](#), [Restore Backup Set](#), [Restore from Diskette](#), and [Restore Original Registry](#).

Restoring does not improve the registry, it only changes the registry back to what it was before. To improve the registry, try the [RegPack feature](#).

After the "Restore" button is clicked, a [dialog box](#) will be shown which will allow you to change the way you want to restore.

Press the ["Change Restore Preferences" button](#) to change restore method.



Click on an item above to get more information.

[RegPack Screen](#) - press the [RegPack button](#) to repair and rebuild the registry.

During the RegPack process, Windows95 will quit and the registry will be fixed and reinstalled. Warning - lately we have received reports of RegPack taking several hours. So be prepared to wait. After the RegPack process if finished, Windows95 will begin again.

Press the "[If you do not have Windows95 B, Click here](#)", to get instructions for downloading a patched regedit.



Click on an item above to get more information.

[Config Screen](#) - press the [Configure button](#) to show the Preferences window. Selecting one of the items from the list box will also display the Preferences window. The Preferences window has [Backup and Restore Preferences](#), [Miscellaneous Preferences](#), the [Backup Manager](#), and [Files to Backup and Restore](#).



Click on an item above to get more information.

Boot Disk Screen - press the Boot Disk button to make a bootup diskette. If Windows95 then does not start up in Safe Mode, just insert the diskette in the drive and restart the computer. The bootup diskette will start DOS and run the DOS version of WinRescue 95.

When making the bootup diskette, after you press the "Boot Disk" button, an input box will appear. Put the drive letter of the diskette and press OK. A DOS window will open. Follow the directions. The DOS window will not be finished until you answer, no, to whether you want to format another diskette or not.

After a diskette has been created, check out the new diskette. Place the diskette in the drive and restart the computer. If the DOS version of WinRescue 95 starts, then the diskette is good. Store it in a safe place.

If the diskette does not work, it may be due to a bad diskette. Try it again with a different diskette.



Click on an item above to get more information.

[Help Screen](#) - press the [Help button](#) to show these Help pages. You may also press <F1> to show these Help pages.

[Startup Screen](#) - this is the screen that is shown when WinRescue 95 is first started.

[RegPack Info](#) - this is the screen that is shown before RegPack is executed.

[Tutorial](#) - this is special set of help screens that will quickly teach you how to use WinRescue.

Boot Disk Button - press the "Book Disk" button to make a bootup diskette.

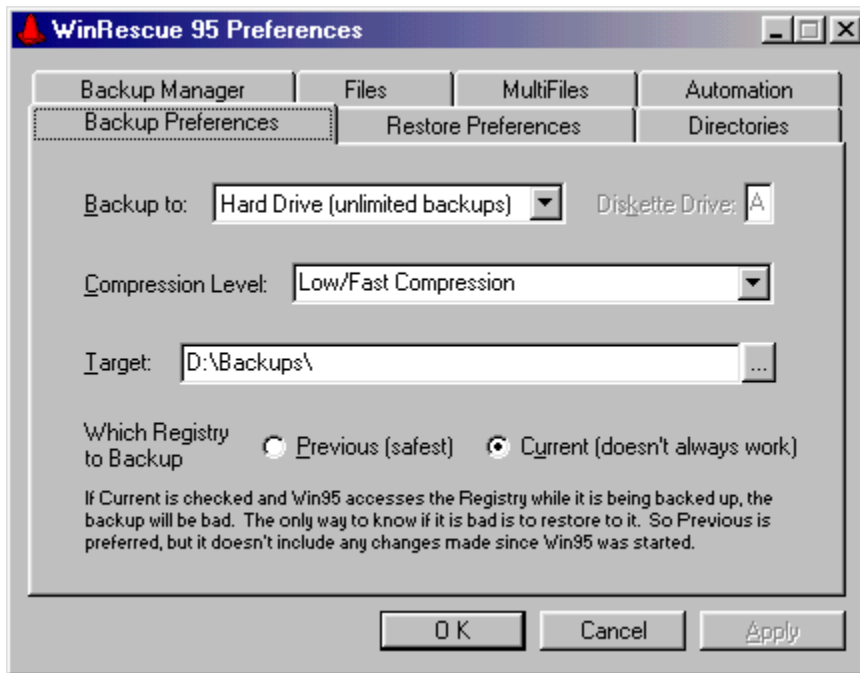
An input box will appear prompting you for the drive letter of the diskette drive (usually A or B).

Next a DOS window opens up. Follow the directions. Do not insert a diskette that has anything on it that you do not want to lose. This step will format the diskette erasing all of its contents and install system files. The DOS window is not finished until you answer, no, to whether you want to format another diskette or not. If it says it cannot make a system diskette, you need to insert another diskette and try formatting again.

After the DOS window disappears, special files will be created on the diskette.

Please check the new bootup diskette. Place the diskette in the drive and restart the computer. If the DOS version of WinRescue 95 starts, then the diskette is good. Store it in a safe place.

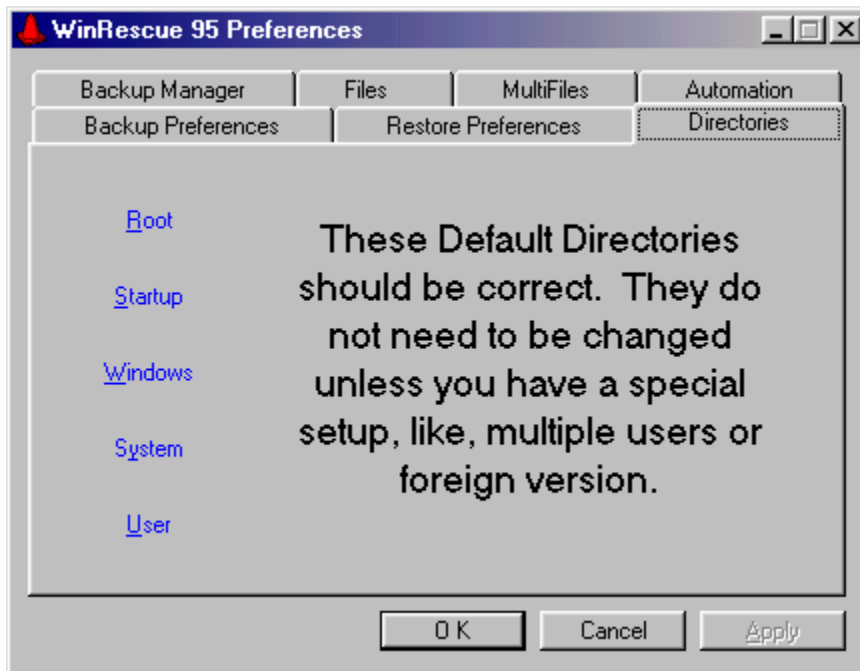
If the diskette does not work, it may be due to a bad diskette. Try it again with a different diskette.



Click on an item above to get more information.

[Backup Preferences Screen](#) - allows changing the following preferences: the method of backup (this includes the maximum number of backups to allow on the hard drive and backup to diskette), the diskette drive, compression ratio of the backup sets, whether to delete all files on a diskette before performing Backup to Diskette (this includes new diskettes that are inserted during the backup process), the Target directory for Backup Sets, and which registry to backup.

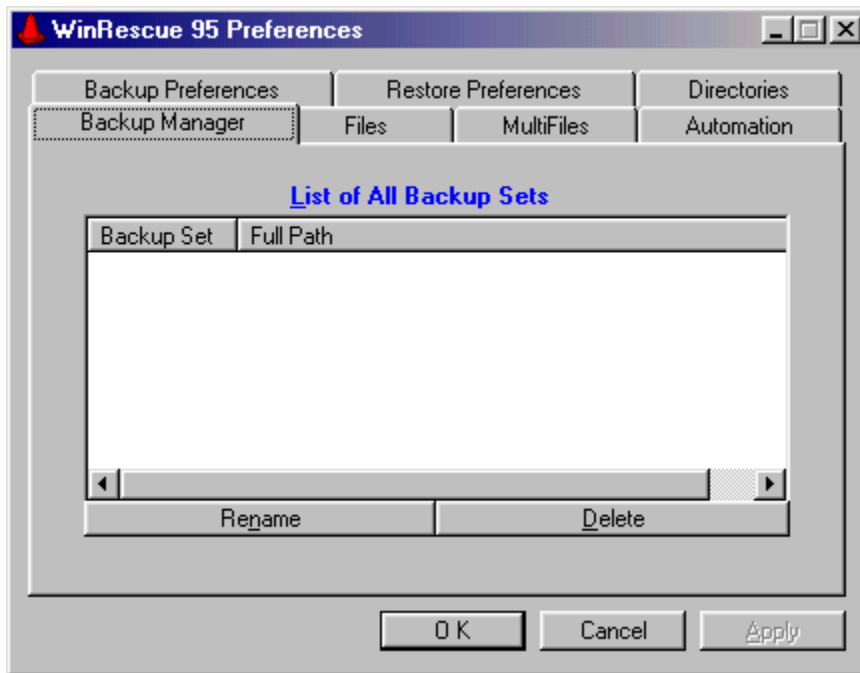
[Target Directory for Backup Sets](#) - the location where Backup Sets are stored can be specified here. When a backup is made, it will be put in a subdirectory of the specified Target directory.



Click on an item above to get more information.

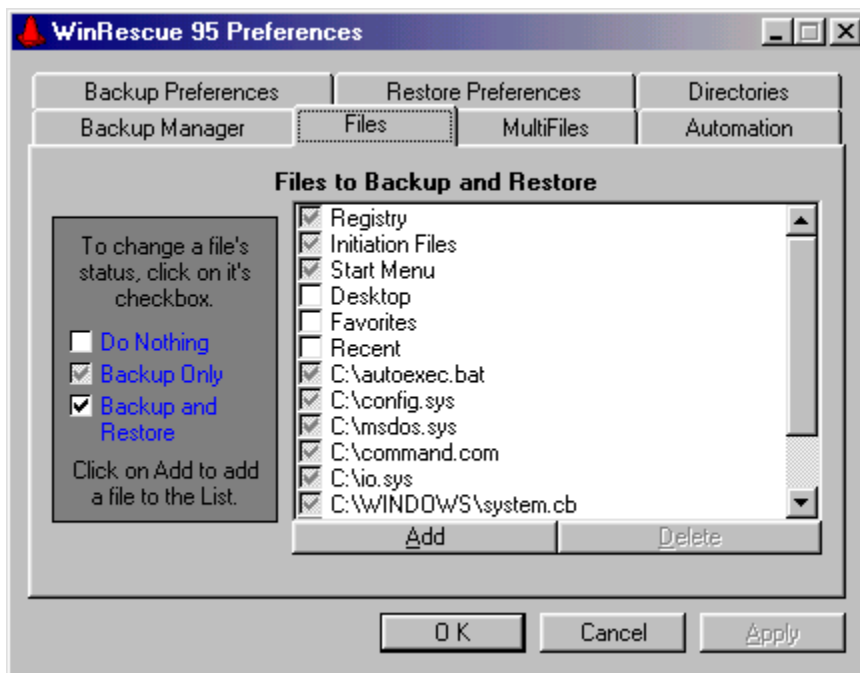
[Default Directories Screen](#) - allows the changing of default directories.

The Default Directories are Root, Startup, Windows, System (this is the location of system.dat, not the System directory), and User (location of user.dat).



Click on an item above to get more information.

[Backup Manager Screen](#) - all of the Backup Sets are listed here. If you want to rename or delete a backup set, it should be done only from the Backup Manager, not from the Windows Explorer.



Click on an item above to get more information.

[Files](#) - allows the user to specify which files to backup and which files to restore. Files may also be added to the default list.

[Go here](#) for a description of each of the items listed.

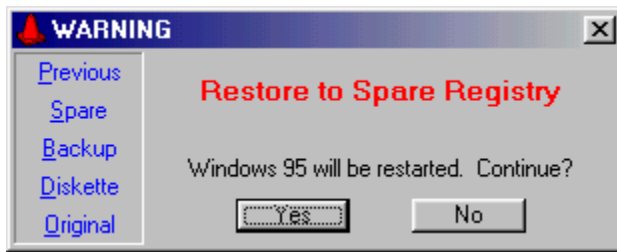
The first 15 items may not be deleted, but they may be disabled by removing the check from their checkbox.

The check in the checkbox shows what will be done with that item during backup and restore. It may be changed by clicking on it.

If an item is not checked, it will not be backed up during a WinRescue backup, and it will not be restored during a Restore to Backup.

If an item has a gray check in the checkbox, that item will be backed up only and not restored. The first two items, Registry and Initiation Files, will always be backed up.

If an item has a black check in the checkbox, that item may be both backed up and restored.



Click on an item above to get more information.

[Pre Restore Screen](#) - gives you a last chance to change the Restore method. The currently selected method is shown in the middle of the window.

On the left side of the window are the different restore methods that may be used. Selecting one will change the restore method.

Number of Backups - the dropdown box allows the user to select whether he will allow an unlimited number of backups, only one backup, up to 3, 5, or 10 backups, or whether to backup to diskette. If a limited number of backups are specified when a backup is made, it will be added to the Target directory and if the limit is exceeded, a previous backup will be deleted.

For example if "Hard Drive (up to 3 Backups)" is selected then only three backup sets are kept. When a fourth backup is made, the second backup set is deleted, the third backup set is moved up to the second slot and the new backup set is put in the third position. The first backup set is always kept unless manually deleted by you in the [Backup Manager](#).

Diskette - WinRescue 95 now makes backups to several diskettes if the backup set is too big for one diskette.

[Backup Button](#) - press the "Backup" button to backup configuration files. These files will be copied to a subdirectory of the Target directory. WinRescue will assign the date to the name of the subdirectory and allow you to change it if you want.

To backup to diskette you must first change the [Backup Preferences](#).

[Compression Level of Backups](#) - this dropdown box allows the selection of one of four compression options:

Do Not Compress - backed up files are copied to the target directory and directories (Start Menu, Desktop, etc.) are compressed at the lowest ratio. 12 files (3.64 megabytes) were copied in 19 seconds.

Low/Fast Compression - compresses files at the lowest ratio. These backups are larger than higher ratio compressions, but the compression is faster. 12 files (3.64 megabytes) were compressed to .91 megabytes in 19 seconds.

Medium Compression - compresses files at the medium ratio. 12 files (3.64 megabytes) were compressed to .86 megabytes in 23 seconds.

High/Slow Compression - compresses files at the highest ratio. These backups are smaller, but compressing them takes longer. 12 files (3.64 megabytes) were compressed to .82 megabytes in 36 seconds.

Backup files are compressed into PKZip compatible files.

Which Registry to Backup

Windows keeps two Registries: previous Registries and the current Registry.

The current Registry choice is provided for those who like to live dangerously. Windows is constantly consulting and changing the current Registry. If Windows consults it while you are backing it up, your backup will be bad. You will only find out that it is bad when you try to restore from it and it doesn't work. So my advice to you is to backup the previous Registry or at least have a few on hand.

The previous Registry will not have any changes that have been made since Windows was started. If you are using this option and you want to save current changes, restart Windows95 first and then do a backup.

Saves any changes and closes the Preferences window.

Closes the Preferences window without saving changes.

Saves any changes without closing the Preferences window.

[Restore Previous Registry](#) - causes the Restore button (in the Restore window) to restore the Registry files from the Previous Registry.

Other files, Start Menu, Desktop, Favorites, and Recent are not restored. Only the Registry files are restored.

[Restore Spare Registry](#) - causes the Restore button (on the [Restore page](#)) to restore the Spare Registry. Whenever a backup is made by WinRescue, WinRescue makes an uncompressed spare backup of the Previous Registry and places it in the Windows directory as user.ray and system.ray. This is the Spare Registry.

When Restore is performed with this method only the registry files and none of the other configuration files are restored.

[Restore Backup](#) - causes the Restore button (on the [Restore page](#)) to restore the selected Backup Set. The dropdown list box allows you to select which backup to restore. The top selection (Most Recent Backup) will restore the most recent backup. This method restores all of the files that are checked in the [Files](#) section.

[Restore from Diskette](#) - causes the Restore button (on the [Restore page](#)) to restore a backup from diskette. The drive letter of the diskette drive must be entered in the [Backup Preferences](#) (A is the default drive).

If the Backup has spanned a file over several diskettes, when that file is restored, insert the last diskette with it on it, first. Later, you will be prompted to insert the first diskette with that file on it and so on.

[Restore Original Registry](#) - causes the Restore button (on the [Restore page](#)) to restore the Original Registry. Restoring to the Original Registry is just like reinstalling Windows without spending the thirty minutes copying files onto your hard drive that are already there. You will be prompted for a user name, time zone, etc.
This should be taken only as a last resort.

Files to Restore - these files are restored when "Restore Backup" is executed.

Registry Files (the two registry files)

Initiation Files (the two initiation files)

Start Menu (all items in the Start Menu)

Desktop (all items on the Desktop)

Favorites (all items in Favorites)

Recent (all items in Recent)

autoexec.bat (bootup file for DOS for backwards compatibility only)

config.sys (bootup file for DOS for backwards compatibility only). If you have only had a later version of Win95 on your computer, it is highly likely that you will not have autoexec.bat or config.sys on your computer.

msdos.sys (bootup configuration for DOS and Windows)

system.cb (empty shell of system.ini)

ShellIconCache (a cache of icons used by Windows, sometimes Windows deletes this file if it doesn't need it, this is normal)

ttfcache (a cache of fonts used by Windows, sometimes Windows deletes this file if it doesn't need it, this is normal)

dosstart.bat (something like, autoexec.bat, but it is only activated when DOS is run from Windows)

protocol.ini (initiation file for networks)

Registry Files - system.dat and user.dat are the Registry files. They are in the Windows directory and are hidden.

System.da0 and user.da0 are the Previous Registry files. System.ray and user.ray are the Spare Registry files. They are also in the Windows directory and are hidden.

Initiation Files - win.ini and system.ini are initiation files consulted by the Registry. They are in the Windows directory. They are mainly used for backwards compatibility with earlier versions of Windows.

[Desktop](#) - the shortcuts and files that appear on the desktop are backed up in desktop.zip. They can be restored to the desktop.

Start Menu - The Start Menu is what appears when you click on "Start" and move the cursor over the "Programs" item.

Start.ini is a list of files and directories in the Start Menu. This file is created by WinRescue and put in the Backup directory. Start.zip is also produced. It is a zip file of all of the files in the Start Menu.

When Restore Backup is performed with this option checked, WinRescue compares all of the files and directories in the start menu with the list in Start.ini and deletes any excess. Then the previous files are unzipped from the start.zip file.

This option is recommended after Restore Original Registry has been performed. It will get rid of all the excess shortcuts that Windows put in the Start Menu.

[Favorites](#) - the items in the Favorites list are backed up in favorites.zip. They may be restored to the Favorites list.

Recent - the items in the Recent list are backed up in recent.zip. They may be restored to the Recent list.

[List of All Backup Sets](#) - when a backup is added to the harddrive, it is added to this list. From this list you can rename or delete the backup sets.

[Heading to the Backup Column](#) - the current number of backups on the harddrive is here. This is the heading to the column that tells the names of the Backup Sets.

[Backup Sets](#) - when a backup is made all of the files are put in a new subdirectory of the specified Target directory. The names of the Backup Sets and their locations are listed here.

[Full Path of Backups](#) - the location of each backup set is listed here. This setting cannot be changed.

[Rename Backups](#) - the Backups may be renamed by selecting a Backup and then either pressing the Rename button or clicking the mouse one more time. Renaming an item renames the directory.

WARNING - if you rename a backup outside of WinRescue (with the Windows Explorer) an error will occur when running WinRescue.

Delete Backup - to delete a Backup select the Backup and then press the Delete button. This will delete the subdirectory of that Backup and all of its files.

WARNING - if you delete a Backup outside of WinRescue (by using the Windows Explorer) an error will occur when running WinRescue.

Default Directories - directories where configuration files are found. Some foreign versions and network setups of Windows may use different directories. This option allows the user to change the default directories. If WinRescue works, DO NOT change these settings. If the wrong directories are specified, WinRescue will not work correctly.

The directories that may be changed are:

Root
Startup
Windows
System
User

[Root Directory Setting](#) - the directory where autoexec.bat, config.sys, and msdos.sys are located. It is usually C:.

When this button is clicked a submenu will appear with the following choices:

- Current Root Directory Setting**
- Browse**
- Default Directory**

[Current Directory Setting](#) - tells the current directory setting of the selected button. This item is for your information only, clicking on it will do nothing.

[Startup Directory Setting](#) - the location of the Startup directory. WinRescue consults the Registry for the location of the Startup directory, so this setting should not need to be changed.

When this button is clicked a submenu will appear with the following choices:

Current Startup Directory Setting
Browse
Default Directory

Browse - selecting this item will display a dialog box. Find the needed file (except with the Startup directory where only a directory needs to be selected) on your harddrive, select it, and press Open. Press Cancel to keep the old directory.

[Default Directory](#) - clicking on this item will set the directory setting back to the default setting. This item is not enabled if the current directory setting is the same as the default setting.

[System Directory Setting](#) - the directory where system.dat is located. This is usually not the Windows directory.

When this button is clicked a submenu will appear with the following choices:

- Current System Directory Setting**
- Browse**
- Default Directory**

[User Directory Setting](#) - the directory where user.dat is located.
When this button is clicked a submenu will appear with the following choices:

- Current User Directory Setting**
- Browse**
- Default Directory**

[Windows Directory Setting](#) - the directory where win.ini is located.
When this button is clicked a submenu will appear with the following choices:

- Current Windows Directory Setting**
- Browse**
- Default Directory**

Functions to Perform Regularly - if one of these functions is set to something besides "Do Not Perform" or "Use Scheduler", a shortcut in the Startup directory will check to see if it is time to perform the function every time Windows is started.

The three functions that can be performed regularly are:

Start
Backup
RegPack

Start and Wait - at the selected interval (daily, weekly, bi-weekly, monthly, when run by the task scheduler, or never) WinRescue will start when Windows is started.

If you want to perform one of the other options and want WinRescue to remain open after the operation is performed, set this frequency at the same time and to the same frequency as the other operation.

Automatically Perform Backup - at the selected interval (daily, weekly, bi-weekly, monthly, when run by the task scheduler, or never) WinRescue will start and perform a backup when Windows is started.

If you have registered WinRescue and are not displaying the startup screen, this function will be automatically performed at the selected interval without the need for any input by you. If you want WinRescue to remain running after this operation is performed, set the "Start WinRescue 95 and Wait" function.

[Automatically Perform RegPack](#) - at the selected interval (daily, weekly, bi-weekly, monthly, when run by the task scheduler, or never) WinRescue will start and rebuild the Registry when Windows is started.

If you have registered WinRescue and are not displaying the startup screen, this function will be automatically performed at the selected interval without the need for any input by you. If you want WinRescue to remain running after this operation is performed, set the "Start WinRescue 95 and Wait" function.

Starts WinRescue 95.

Quits WinRescue 95.

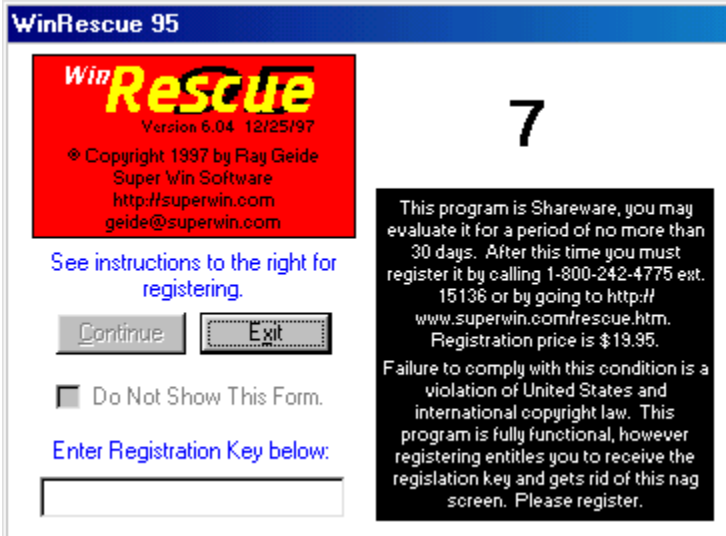
[Do Not Show This Form](#) - when WinRescue is registered, this checkbox is enabled allowing the user to skip the startup screen.

Registration Key - when you register WinRescue, you will receive a number. Enter it in the Registration Key text box on the startup screen. Be sure to enter exactly as it is written. When you press, "Continue", WinRescue will acknowledge whether it is correct or not. If it is correct, the "Do Not Show This Form" checkbox will be enabled next time the startup screen is displayed. If the Registration Key is not correct, WinRescue will be terminated.

You may use WinRescue for 30 days by not entering a number.

If you have already registered an earlier version of WinRescue 95 that did not come with a key, send me your name and the date when you registered WinRescue. If you are indeed a registered user, I will send you the Registration Key. My email address is geide@superwin.com.

Countdown - sorry. Register WinRescue and you will never see this countdown again, otherwise wait ten seconds.



Click on an item above to get more information.

WinRescue Features

Backs up Thirteen different files, the Start Menu, the Desktop, Favorites, and Recent items, plus any additional files, folders, or groups of files that you specify.

Backs up and Restores only the files or folders that you specify.

Backs up and Restores entire directories and subdirectories using wildcards.

Provides FIVE different ways to restore the Registry.

Streamlines and Fixes the Registry.

Makes an Emergency Bootup Diskette.

Specify Target Location of WinRescue Backups.

DOS version of WinRescue 95 for Emergency Recovery.

Makes UNLIMITED backups or limit the number to 1, 3, 5, or 10.

Backs up to and restores from multiple diskettes.

Compresses backups into PKZip files.

Setup WinRescue with Windows' Task Scheduler.

Specify Compression Level.

Easy and Comprehensive Help (just press <F1>).

[Previous Button](#) - changes the Restore Method to Restore to Previous Registry.

[Spare Button](#) - changes the Restore Method to Restore to Spare Registry.

[Backup Button](#) - displays a submenu with all the saved backups. Select one to change the Restore Method to Restore to Backup.

[Diskette Button](#) - changes the Restore Method to Restore from Diskette.

[Original Button](#) - changes the Restore Method to Restore to Original Registry.

Emergency Restore Instructions.

Just in case WinRescue 95 cannot restore Windows, here are instructions on how to do it yourself in DOS.

How to Restore the Registry in DOS

The easiest way to restore in DOS is to use the bootup diskette, that WinRescue 95 creates. There is also a DOS version of WinRescue 95 that will restore the Previous Registry, Spare Registry, or Original Registry. It is called, `rescue.exe`. It may be found in the WinRescue 95 directory or the root directory (usually, C:). If you didn't make a bootup diskette or you can't find `rescue.exe`, you can do it the hard way outlined below.

To Get Into DOS

- Press <F8> when your computer says, "starting Windows95".
- From the list select, Safe mode command prompt only. This should be number 7.

Running `rescue.exe` in DOS

- Go to C Drive by typing, `C:<ENTER>`. (<ENTER> means to press the Enter key)
- Change to the root directory by typing, `CD\<ENTER>`.
- Run `rescue.exe` by typing, `rescue<ENTER>`.
- In the DOS version of WinRescue 95 choose the second option, Spare Registry..

If the DOS version Doesn't Work:

- Go to the Windows Directory
- Change drives by typing the drive letter, colon [:], and <ENTER>.
- Change to the root directory by typing, `CD\<ENTER>`.
- Change to directories by typing, `CD`, the name of the directory, and <ENTER>.
- Find out what is in a directory by typing, `DIR<ENTER>`.
- Type the Following Commands to Restore the Registry to the Spare Registry (produced by WinRescue 95 when you make a backup)
 - `command\attrib -h -r -s user.dat<ENTER>` (if this produces an error, you need to find out where `attrib.exe` is and type that location instead of `command\attrib`)
 - `command\attrib -h -r -s system.dat<ENTER>`
 - `command\attrib -h -r -s user.ray<ENTER>`
 - `command\attrib -h -r -s system.ray<ENTER>`
 - `copy system.ray system.dat<ENTER>`
 - `copy user.ray user.dat<ENTER>`
 - `exit` or `win` (to start Windows95)

Moves the WinRescue 95 window when the left mouse button is held down and moved.

Minimizes the WinRescue 95 window.

Exits WinRescue 95.

[RegPack Button](#) - press the "RegPack" button to fix and rebuild Windows95's Registry. It is recommended to do this at regular intervals. Without RegPack, no matter how many changes you make to the Registry, it will never become smaller. The changes that are made become excess mush in the Registry that is only removed with RegPack. It also corrects some problems and causes Windows95 to run smoother.

Closes the Update RegEdit window.

Download Regedit - pressing the Download button will open your default browser (if you have one), go to the website, and download a newer version of regedit. If pressing this button, doesn't go online and download the new regedit, open your browser, enter <http://www.users.dircon.co.uk/%7Eflibble/reg/reg.zip> in the Address textbox and press enter (you must be online). This will download the new regedit (it is a small file of 52kb).

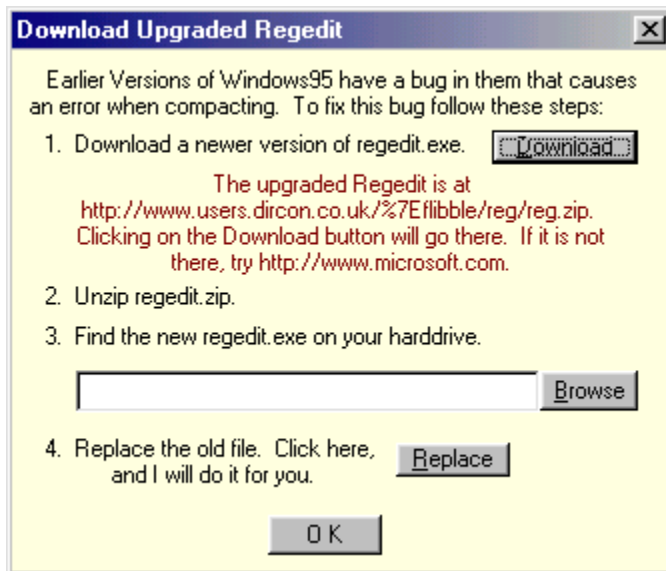
This site will be operational until Microsoft makes the newer version available on its web site (it hasn't happened yet, and probably never will).

At the parent site you may also find additional information about regedit (<http://www.users.dircon.co.uk/%7Eflibble/regsmall.html>).

Unzip Regedit - the downloaded regedit may be zipped. If so unzip it.

Find Downloaded Regedit - use the browse button to find where your browser downloaded the new version of regedit to on your harddrive. Do not select the one in the Windows directory. This is the old one.

Replace Old Regedit - if you have done the first two steps, clicking the Replace button will copy the new regedit over the old one.



Click on an item above to get more information.

[Download Upgraded Regedit Screen](#) - Win95 and Win95A (look in the properties of My Computer to find out which version you have) have a faulty regedit.exe which will cause the RegPack process to hang and crash Windows 95 (WinRescue 95 will not allow you to perform RegPack if it detects an old regedit.exe). This screen will assist you in downloading the new regedit.exe file.

Press the Download button to download the new file. The web address of the new regedit is given here.

You will need to unzip the reg.zip file, find it, and copy it into the Windows directory.

Restore Button - press the "Restore . . ." button to restore Windows95's configuration to a previous configuration. This is achieved by copying previously saved configuration files back to the configuration files. Exactly which files will be used depends on the Files Settings and which Restore Method is selected.

Help Button - press the "Help" button to display Help.
<F1> may be pressed at anytime to display help relevant to the active control.

[Configure Button](#) - press the "Configure" button to display the Preferences window.

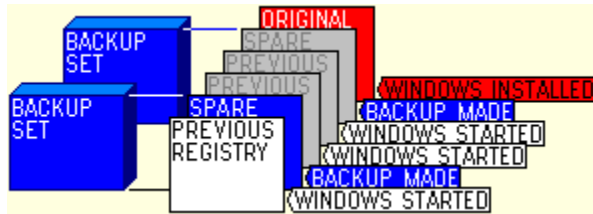
[Config Listbox](#) - double click on one of the items in the list box to display its corresponding settings. The following items are available in the listbox:

- Backup Method**
- Compress Backups**
- Target Directory**
- Which Registry**
- Backup to Diskette**
- Restore Method**
- Default Directories**
- Auto Start Frequency**
- Auto Backup Frequency**
- Auto RegPack Frequency**
- Delete Backups**
- Rename Backups**
- Files to Restore**

Which Restore Option to Use

There are five Restore Options to choose from: Original, Backup Set, Diskette, Spare, and Previous.

The chart below shows the different types of backups and when each are made.



Choosing which option to use may seem overwhelming. Here is my advice:

It is best to run WinRescue 95 in Windows 95 than in DOS.

In Windows 95:

Use Previous if . . .

- you want to restore to how Windows95 was last time it ran.
 - Windows 95 has not already tried to restore itself.
- Notice - the Previous backup is often corrupt.

Use Backup or Diskette if . . .

- you have backed up since starting Windows.
- you want to restore the Start Menu, Desktop, Favorites, Recent items, or one of the non registry files.
- Windows 95 has already tried to restore itself.
- you want to make a full restore.
- you want to go back to a certain previously saved configuration.

Use Spare if . . .

- you have deleted all of the Backup Sets and Previous doesn't work.

Use Original if . . .

- nothing else works.

In DOS:

Backup and Diskette are not available in the DOS version. You can always use one of the other options to get into Windows 95, and then perform a Backup or Diskette Restore.

Previous - when Windows95 is started it checks to see if the registry is good. If it thinks that the registry is good, it makes a copy and puts it in the Previous position. So the Previous restore option returns Windows95 back to how it was when it was last run. The problem is that Windows95 doesn't always detect a corrupt registry and so sometimes the Previous registry may be bad.

Spare - every time WinRescue 95 performs a Backup it places a spare copy of the registry in the Windows directory. So the Spare registry is a copy of the registry when it was last backed up. Note - the Spare option only restores the registry and not the other configuration files backed up by WinRescue 95.

Backup Set - WinRescue 95 backs up all the files checked in the Files section. These are put in a subdirectory of the specified Target directory. Backup Sets cannot be restored in the DOS version of WinRescue 95.

Diskette - this is the same as the Backup Set except that the specified files are compressed onto a diskette. If the files are too big to fit on one diskette, they will be spanned onto as many diskettes as needed. Diskette Backups cannot be restored in the DOS version of WinRescue 95. If you cannot get into Windows95, you must use one of the other Restore options. Then when you get into Windows95, you can use this Restore option.

Original - Windows95 saves a copy of the Original registry. This option will start Windows95 at the very beginning. Windows95 will ask all of the initiation questions. You should never have to use this Restore option.

WinRescue 95 Tutorial

1. Welcome to WinRescue 95

WinRescue is one of the first and best Windows Recovery programs. Features, like RegPack, put WinRescue 95 at the top of its class. This tutorial will acquaint you with the major features. Consult [Help](#) for more information.

Begin by clicking on the "Change Backup Preferences" button.

(New features with this version are in red.)

[Next>>](#)

2. Backup and Restore Preferences ([more info](#))

Set the number of backups to keep on the hard drive or diskette in the "Backup to:" dropdown box.

If you don't want the backups placed in the default directory, change the "Target" setting.

Choose the default Restore method (this can be changed before restoring).

Click on the "Directories" tab.

[Next>>](#)

3. Directories ([more info](#))

The default directories should not have to be changed (if, during a backup, files cannot be found, check these settings).

If you want WinRescue to start up and perform a task automatically, click on the "Automation" tab and specify the appropriate time intervals for each task. If you want a task to be performed at a certain time, select "Use Scheduler" for that task and press the "Setup Task Scheduler" button. Instructions will be given on how to proceed (Task Scheduler comes with MS Plus).

[Click on the "Files" tab.](#)

[Next>>](#)

4. Files ([more info](#))

Decide and mark which files you want to backup and restore. You can add any other files that you want backed up and restored.

Click on OK.

[Next>>](#)

5. Backup ([more info](#))

If Win95 is running correctly, now is a good time to make a backup. Click on the big Backup button.

If you are having problems with the Registry, try going to [RegPack](#).

[Click on the "Boot Disk" tab.](#)

[Next>>](#)

6. **Boot Disk** ([more info](#))

Click on the big "Boot Disk" button to make an emergency boot diskette. Follow the instructions. Note that the DOS part will not be done until it asks if you want to format another diskette. Answer No and the process will continue.

Once you have made a boot diskette, turn off the computer, insert the diskette, and start the computer.

If the DOS version of WinRescue 95 comes on, then the diskette is good. Save it for an emergency.

If it doesn't work, the diskette may be bad. Try making another diskette.

Remove the diskette from the drive and restart Win95.

[Click on the RegPack tab.](#)

[Next>>](#)

7. **RegPack** ([more info](#))

Click on the big "RegPack" button. Win95 will restart and the Registry will be rebuilt. This will remove errors and excess from the Registry. The Registry will end up smaller and more efficient.

Click on the "Restore" tab.

[Next>>](#)

8. Restore ([more info](#))

I brought you here so that you could see where to go if you have a Win95 crash. If Win95 crashes, try to get in Window's Safe Mode and run WinRescue 95. If you can't get into Windows, run rescue.exe from DOS (it is located in the root directory and WinRescue's directory) or use the WinRescue 95 boot up diskette.

This ends your tutorial. For more information, see Help.

Task Scheduler Instructions

1. Setup Task Scheduler.

If you would like to configure the Task Scheduler to run WinRescue [Click Here](#) to continue.


2. Edit Settings.

If you have already configured the Task Scheduler to run WinRescue but would like to change some of the settings [Click Here](#) to continue.

3. Delete WinRescue.

If you would like to remove WinRescue from the Task Scheduler [Click Here](#) to continue.

Adding a Task

The Task Scheduler has been started. Look on the TaskBar next to the Time. There should be an icon that looks like this . Double click on it.

This will open the Scheduling Tasks window. Double click on "Add Scheduled Task".

This will start the Scheduled Tasks Wizard. Click on "Next >".

In the next window find WinRescue 95 under "Application". It should be near the bottom. Click on WinRescue 95 and then click on "Next >".

Next>>


Adding a Task (cont.)

In the next two windows, fill in the information to your preferences. It is recommended that you keep the name of the task as "WinRescue 95". Click on "Next >".

In the last window, check the "Open advanced properties for this task when I click Finish" checkbox. Click on "Finish".

Now the Properties box will open. In the "Run:" textbox, add " schedule" (that is a space and the word, schedule) to the end of the filename. So it should look something like, "c:\winres~2\rescue95.exe schedule", depending on where WinRescue 95 is located. Click on "OK".


Editing a Task

The Task Scheduler has been started. Look on the TaskBar next to the Time. There should be an icon that looks like this . Double click on it.

This will open the Scheduling Tasks window. If WinRescue has already been setup, there should be a WinRescue 95 task in this window. If it isn't there, go to the instructions on Adding WinRescue by [Clicking Here](#).

Double click on the WinRescue task and make the desired changes in the Properties window. Click on OK or Cancel to quit.

Deleting a Task

The Task Scheduler has been started. Look on the TaskBar next to the Time. There should be an icon that looks like this . Double click on it.

This will open the Scheduling Tasks window. If WinRescue has already been setup, there should be a WinRescue 95 task in this window. Highlight it by clicking on it then press the Delete button on the keyboard.

If you want to close the Task Scheduler and keep it from being run at startup, click on "Stop Using Task Scheduler" in the "Advanced" menu of the Task Scheduler.

WinRescue 95 New Features

If you are updating WinRescue here are the new features in version 8.

MultiFiles - WinRescue will now backup and restore directories, subdirectories, and groups of files using wildcards (for example, all text files with the wildcard, *.txt).

Task Scheduler - Automatic Functions can now be run at specified times using Win95's Task Scheduler.

New DOS version of WinRescue - the dos version will now restore permanent backups.

New Setup Program - if you want to uninstall just run the uninstal.exe program.

Backup to Diskette - this feature is not compatible with previous versions. If you are backing up to diskette, you need to make new backups.

If you are a first time user of WinRescue, you may want to see our [Tutorial](#).

Frequently Asked Questions

Question - How do I update WinRescue 95?

Answer - Whether you are a registered user or not, updating is the same. Go to <http://superwin.com/rescue.htm> and download the shareware version. When the shareware version is run it will be registered for registered users.

When you enter the registration key, WinRescue hides it on your hard drive and later versions find it and use it. So unless you erase your hard drive, you should only have to enter the registration key once (sometimes new major versions require the reentry of the key).

Question - Does WinRescue 95 work with Win98?

Answer - I wish it did. We have produced WinRescue 98 for Win98. Although they may look alike, inside WinRescue 95 and WinRescue 98 are two different programs. WinRescue 95 is for Win95, Win96, and Win97 and WinRescue 98 is for Win98. This is because (thanks, to the folks at Microsoft) Win98 must be restored differently than Win95.

WinRescue 95 will not work with Win98 and WinRescue 98 will not work with Win95, Win96, and Win97.

We will be offering WinRescue 98 for \$10 to registered users of WinRescue 95. To get this special price you must use our order form (not PsL's).

Question - The RegPack process didn't work and now it has messed up my computer.

Answer - I guess it is too late to tell you to read the instructions. The instructions displayed before the RegPack process is performed, explain all of this. [Click here to see the Instructions](#). No matter what happens during the RegPack process if you know how to restore the Registry and you have backed it up, you will be able to restore Windows, so please read the instructions.

The problem is the regedit.exe file that comes with Windows95. It has a couple bugs that Microsoft has chosen not to correct (Windows98 has corrected most of them). If you have Win95 or Win95a (not Win95b), you can get a newer version of regedit.exe, that will solve one of the problems. Go to <http://www.users.dircon.co.uk/%7Efibble/reg/reg.zip> to download the new regedit.exe (this is the Win95b regedit.exe with a patch that allows it to run in the different DOS version of Win95 and Win95a). Unzip the file and place the regedit.exe file in the Windows directory. If you want to keep the old regedit.exe file, be sure to rename it first.

If this still does not solve your problem, the problem is probably a bad entry in the Registry. This usually causes RegPack to take hours and/or hang. I hope to solve this with version 9 of WinRescue. There is a program that will remove these bad entries. It is available from <http://www.users.dircon.co.uk/%7Efibble/regsmall.html>. This website is probably the most knowledgeable on the Regedit. You should find the latest information there.

Question - Why does the RegPack process take hours to complete and/or hang?

Answer - See the answer to the previous question.

Question - Why doesn't WinRescue restart Windows when it says it will?

Answer - WinRescue uses the Prompt.bat file to restart Windows and run the RegPack

process in dos. WinRescue came with a PIF file (prompt.pif) that was set up to do this. Something must have happened to it. To resetup this file, follow these directions.

Find the prompt.bat file in the WinRescue directory with Windows Explorer. Right click on prompt.bat and select Properties. In the Properties window, click on the Program tab and then on the Advanced button. Please make sure that MS-DOS mode and Use Current MS-DOS Configuration are checked. Then close it by pressing the OK buttons.

Question - Why am I getting an error that says that the dosstart.bat file could not be backed up.

Answer - I would assume that the dosstart.bat file does not exist in the Windows folder and that is why you are getting this error message. Dosstart.bat is consulted by Windows before it runs DOS from Windows. It is like an addition to autoexec.bat. It is used if Windows wants to add something to the way DOS should run. Otherwise it isn't needed and so does not exist.

There is no harm in getting the error message. You could just continue running Backup in this way or you can uncheck dosstart.bat from the Files list of WinRescue's configuration.

Question - When I attempt to create a boot disk, it hangs at the end of the format.

Answer - The answer to this problem comes from Douglas Grace (thank you Douglas). "I am using an older version (original) of NortonAntiVirus for 95 with auto protect enabled. This appears to be the problem. The format starts and runs. When it gets to the load system to the floppy it hangs when asked to allow format to write to the floppy with permission from NAV95 even though Continue option is chosen. This is not a problem with your software. I suggest you instruct users to disable NAV while creating the floppy. It will and does hang-up the entire system which required a power down shutdown to get going again. I attempted this twice before disabling NAV and then it worked fine.

Respectfully,
Douglas Grace
Ex Nihilo
<http://www.pro-site.com>

Question - What is your postal address for ordering.

Answer - Our address for ordering is:
Super Win Software
811 W. 17th. St.
Hutchinson, KS
67501
For more ordering information go to <http://superwin.com/order3.htm>.

Question - Where do I enter the registration key?

Answer - Version 6 started using the key. If you have an earlier version, you need to download the latest shareware version from our website at <http://superwin.com/rescue.htm>. Enter the registration key on the startup screen (the screen that has the countdown from 10). The key must be entered exactly as it is given.

Question - How do I uninstall the old version?

Answer - If the old version has an uninstall option in the setup program, use it. Be

sure not to delete user.ray and system.ray. Warning - if the setup program says that it could not delete all of the files and asks if you want it to delete the entire directory, answer, no. On some computers this ends up deleting more than the WinRescue directory.

If the old version doesn't have an uninstall option, remove the following files:

Delete everything in the old version directory.

In Windows directory, delete the following files that have endings of .ra0, .ra1, .ra2, etc., and .ca0, .ca1, .ca2, etc.

system

user

start

win

sys

DO NOT delete user.dat, user.da0, user.ray, system.dat, system.da0, system.ray, win.ini, or system.ini

In the Windows System directory, delete rescue95.ini

In the Root directory (usually c:, delete the following files that have endings of .ra0, .ra1, .ra2, etc., and .ca0, .ca1, .ca2, etc.

autoexec

config

DO NOT delete autoexec.bat or config.sys.

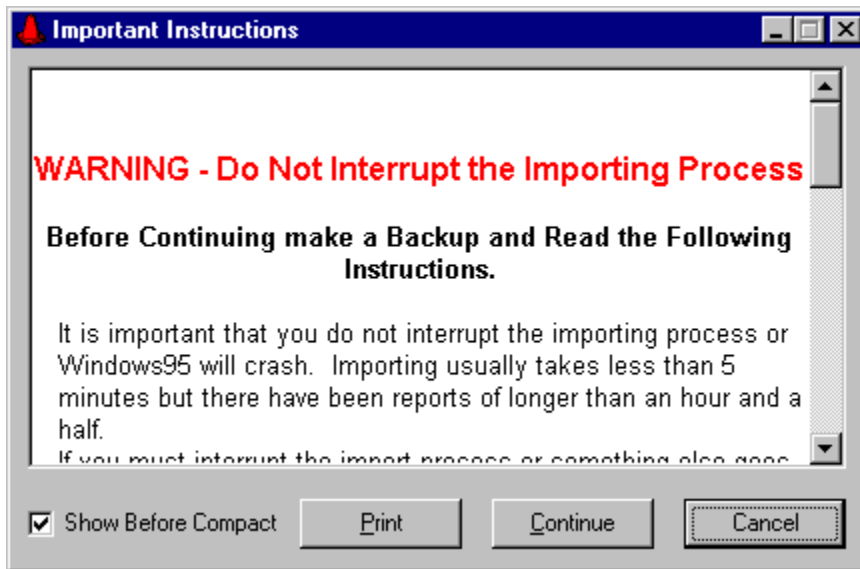
In the Startup directory, delete rescuest.exe

Go to Start - Settings - Taskbar and remove the old version from the Start Menu.

Question - After doing a backup I received a message that certain files could not be copied?

Answer - The problem is that WinRescue could not find these files. There are two reasons why WinRescue may not be able to find these files. 1) because the wrong directory is specified in the Default Directories section of Misc. Settings. Check these setting and make sure that they are correct. 2) because these files do not exist (this may also be true if the file is 0kb). Windows95 uses but does not need some of the files (like, autoexec.bat config.sys shelliconcache) that WinRescue backs up. You can select not to backup and restore individual files in the Files section of Preferences.

Note - system.dat and user.dat must be backed up.



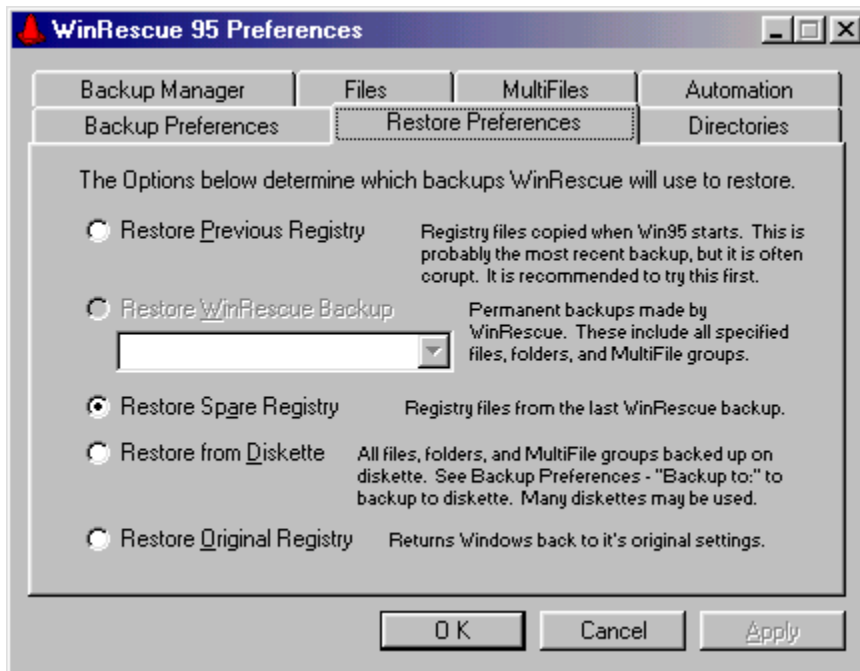
Click on an item above to get more information.

RegPack Warning Screen - displays important emergency restore instructions. It is highly recommended that you print out these instructions and keep them available.

Press the Print button to print out the instructions on your printer.

Press the Continue button to continue with the RegPack process. Warning - lately we have received reports of RegPack taking several hours. So be prepared to wait.

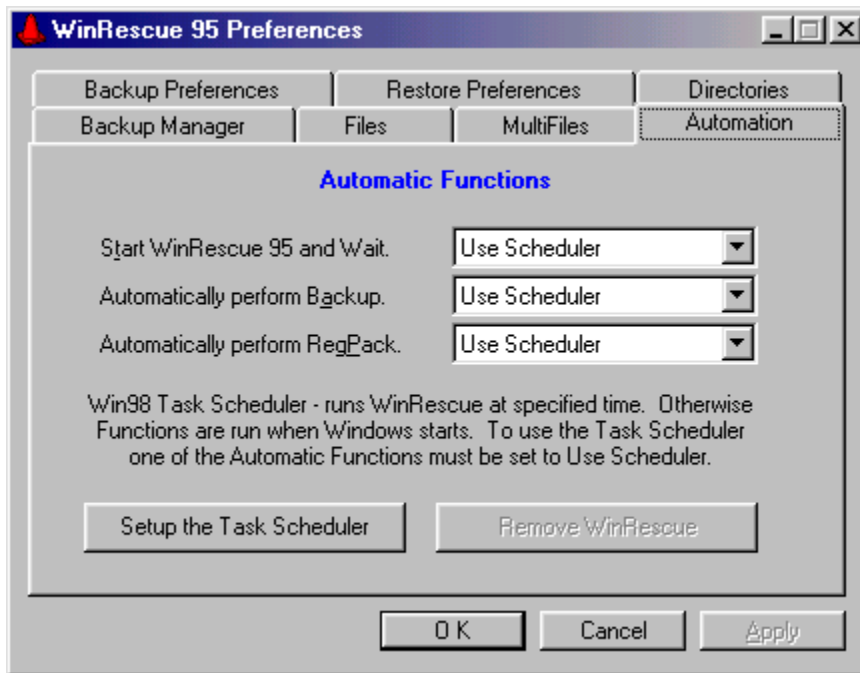
Press the Cancel button to quit the RegPack process.



Click on an item above to get more information.

[Restore Preferences Screen](#) - allows the changing the default restore method. The default restore method is what is performed when the big restore button on the main screen is pressed. After pressing the big restore button a dialog box will appear allowing you to change the restore method before restoring.

The restore methods are [Restore Previous Registry](#), [Restore Spare Registry](#), [Restore Backup Set](#), [Restore from Diskette](#), and [Restore Original Registry](#).



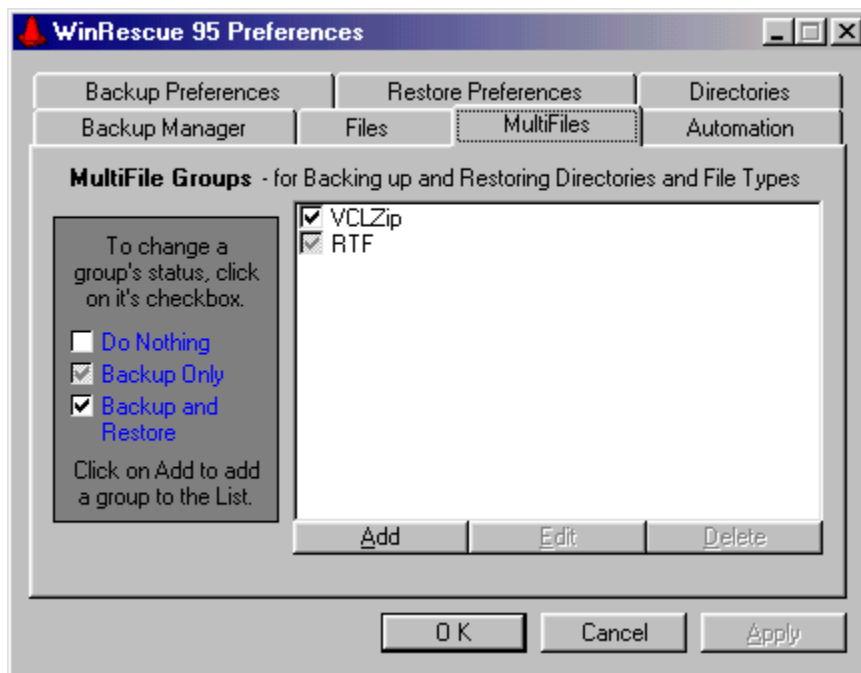
Click on an item above to get more information.

Automation Screen - allows the changing of the automatic features. The first three dropdown boxes specify the frequency with which to perform certain actions. The actions to perform regularly are Start WinRescue 95 and Wait, Backup, and RegPack. These actions will be performed at the specified interval when Win95 is started or by the Task Scheduler. The Setup the Task Scheduler button allows you to setup Windows' Task Scheduler to run WinRescue at certain times. The Remove WinRescue will remove WinRescue from the Task Scheduler.

[Setup the Task Scheduler button](#) - pressing this button will start Windows' Task Scheduler and give instructions on how to set it up with WinRescue. The Task Scheduler can be used to run WinRescue at a specified time and perform the actions set to "Use Scheduler" on the [Automation page](#).

[Remove WinRescue button](#) - pressing this button will remove WinRescue from the Task Scheduler. This will only work if you have named the WinRescue task by the default name specified in the instructions. Otherwise you will have to double click on the Task Scheduler icon next to the time on the TaskBar and delete the task yourself.

If you would like to keep the Task Scheduler from running whenever Windows is running, select "Stop Using Task Scheduler" from the Advanced menu of the Task Scheduler.



[MultiFiles Screen](#) - allows the addition of Folders and Groups of Files to WinRescue's backup. The Add button opens the [MultiFiles dialog box](#) to specify which files to include in the backup zipfile.

The Edit button opens the same [MultiFiles dialog box](#) to change the attributes of the selected MultiFiles item.

The Delete button deletes the selected MultiFiles item.

MultiFiles Dialog Box - allows the changing and setting of the files in a MultiFiles group. First, select the directory in which the files are that you want to backup. Check the "Include SubDirectories" checkbox if you want the subdirectories of that directory also included. Then specify the File Type to include in the MultiFiles group. *.* will include all files in the specified directory. All text files (that is, files ending with the letters, txt) can be specified by *.txt. All of the File Types in the selected directory are displayed in the listbox. You may select one of these or type in your own choice. Last of all, enter a filename for the zipfile. The filename must be 8 letters or less.

